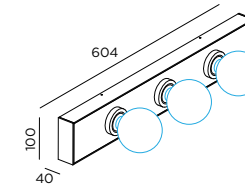


RUVI WALL 3.0

INSTALLATION INSTRUCTIONS | OCTOBER 2023

DIMENSIONS



MOUNTING INSTRUCTION

- 1** Remove the mounting base by loosening the socket screws.
- 2** Mount the base on the wall with screws (screws are not included).
- 3 POWER CONNECTION**
Connect to 220-240V. Connect the wires with the waterproof connectors. Please see the detailed method in the separate instruction sheet of the waterproof connection.
- 4** Fix the luminaire on the base with the socket screws.
- 5** Install the lamps (lamps are not included).

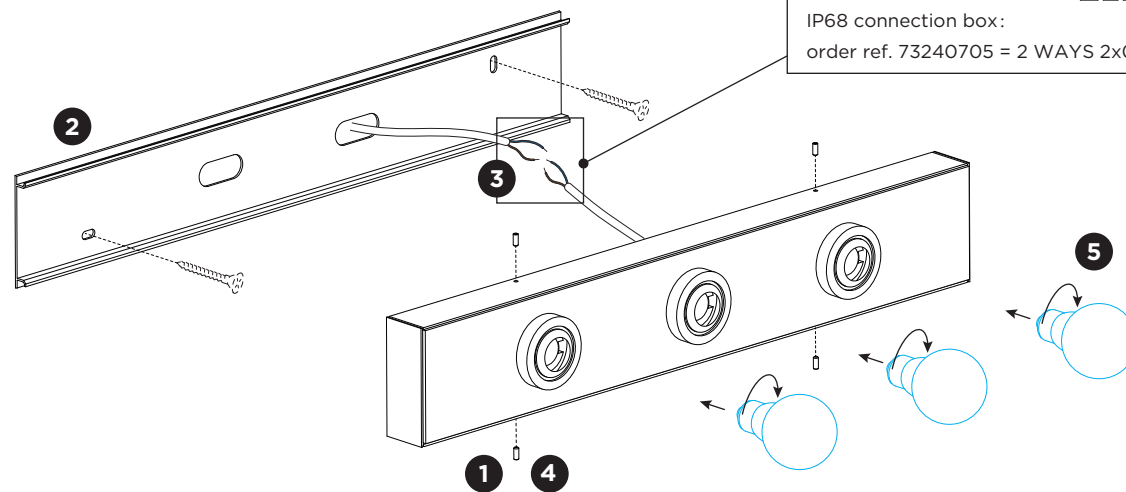
Included:

waterproof connectors:

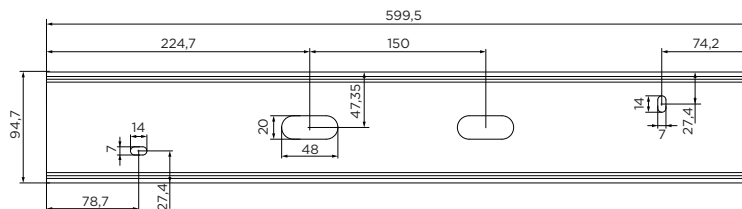


IP68 connection box:

order ref. 73240705 = 2 WAYS 2x0,75Ø4,8-6mm



Mounting base:



WEVER & DUCRÉ
LIGHTING

WEVER & DUCRÉ BV

Spinnerijstraat 99/21, 8500 Kortrijk, Belgium
weverducre.com