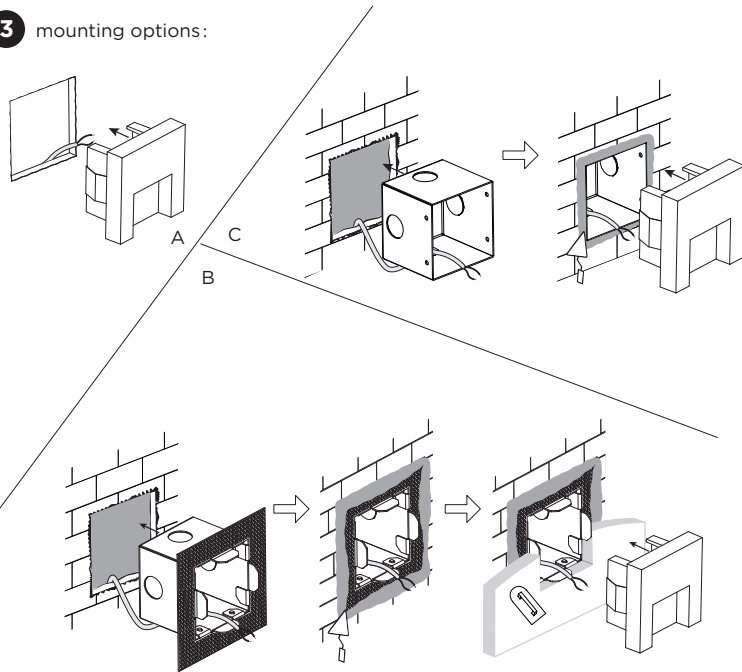


RETO wall recessed

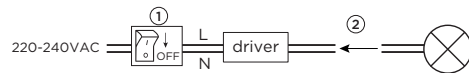
INSTALLATION INSTRUCTIONS | SEPTEMBER 2024

3 mounting options:

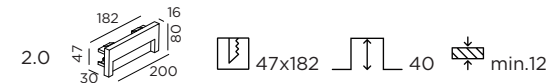


Driver must be powered off before connecting the cables.

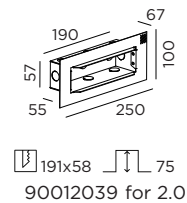
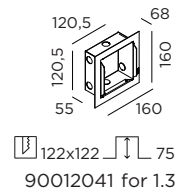
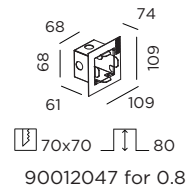
Before connecting the luminaire/LED module to the driver please make sure the driver is not powered but disconnected from the mains. The driver can only be powered when the luminaire/LED module is already connected. Disregarding this instruction might damage or even destroy the luminaire/LED module.



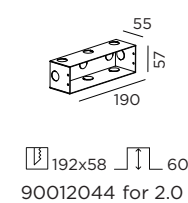
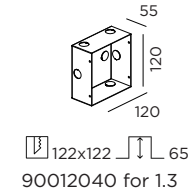
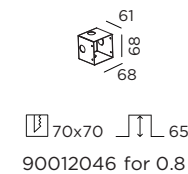
DIMENSIONS



recessed housing incl. plasterkit (optional):



concrete housing (optional):

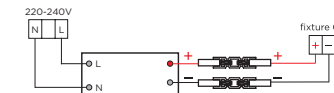


MOUNTING INSTRUCTION

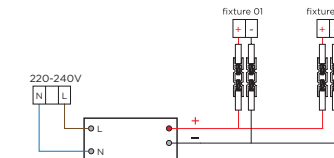
1 Make a hole in the wall according to the prescribed dimensions of the fixture or the recessed housing.

2 **POWER CONNECTION**
Connect to 220-240V. Always use a driver according to the specifications of the fixture.

Single connection for outdoor

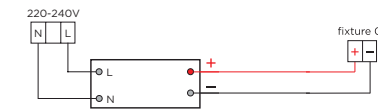


Multiple connection for outdoor

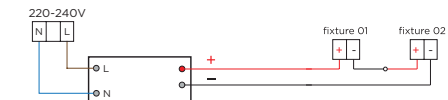


Connect the wires with the waterproof connectors. Please see the detail method in the separate instruction sheet of waterproof connection. Make sure to use a waterproof connection with the same IP rating as the luminaire.

Single connection for indoor



Multiple connection for indoor

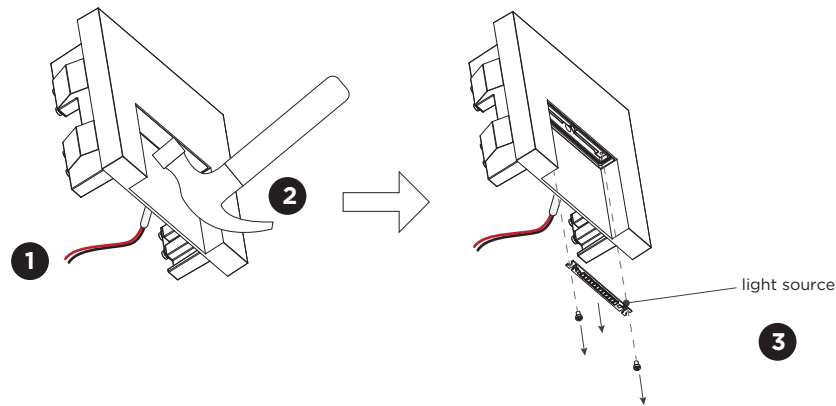


3 A - Insert the fixture in the hole.
B - Insert the fixture in the plasterkit.
C - Insert the fixture in the concrete housing.

PB19-010-792-00_v3

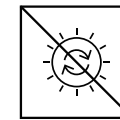
RETO wall recessed

INSTALLATION INSTRUCTIONS | SEPTEMBER 2024





DISMOUNTING AND RECYCLING INSTRUCTIONS Light source

- 1** Pull out the fixture and disconnect the wires between the fixture and the driver.
- 2** Break the lens.
- 3** Unscrew the light source, disconnect the wires and remove it.



The light source is not replaceable.

This luminaire contains a light source with the corresponding energy class:

RETO luminaire type	Energy class
outdoor 0.8/1.3/2.0	
indoor 0.8	
indoor 2.0	